



Lancaster County School District Reopening Considerations

2020-2021 School Year

The Lancaster County School District will follow the guidance from the Center for Disease Control (CDC), the SC Department of Health and Environmental Control (SC DHEC), and local officials, as well as the SC Department of Education (SC SDE), as we make decisions about the reopening of school and to address educational needs while providing the recommended safety precautions.

The district will open schools on August 31, 2020, offering two models to include a fully virtual option and a hybrid model, with the option to move to a more restrictive model (fully virtual) or less restrictive model (fully face-to-face) model based on the current community health situation.

To assist in making our decisions, we will review the statistics as provided by SC DHEC for Lancaster County, the surrounding areas, and the state. At a minimum, the following 3 criteria will be reviewed:

1. Incidence Rate
2. Trend in Incidence Rate
3. Percent Positive Rate

In addition, we will continue to also view area and state statistics and consult with health care professionals, as we continue to follow guidelines as outlined by the CDC, SC DHEC, and SC SDE.

The two pages that follow provide a brief snapshot of the guidance from school from SC DHEC and the CDC. The links to more information is provided at the bottom of each page.

Lancaster County School District Reopening Considerations

2020-2021 School Year



CDC recommends that all decisions about implementing school-based strategies should be made locally, in collaboration with local health officials who can help determine the level of transmission in the community. DHEC is providing this county-level data about disease transmission to support decision-making at the local level. It is not meant to be a stand-alone document.

Metrics and Categorizations:

- **Two – week Incidence Rate:** the number of new cases in the prior two weeks (July 13 - July 26, 2020) per 100,000 people. This metric provides the recent incidence of COVID-19 infections in that county. Categorization (# cases/100,000 people):
 - **Low: 0–50**
 - **Medium: 51 – 200**
 - **High: ≥ 201**
- **Trend in Incidence Rate:** whether the two week incidence rate is increasing, decreasing, or stable compared to the previous two weeks. For purposes of this assessment, consider the trends to be equivalent to:
 - **Decreasing = Low**
 - **Stable = Medium**
 - **Increasing = High**
- **Two-Week Percent Positive Rate:** the percentage of individuals who tested positive out of the number of individuals tested with a molecular (swab, or PCR) test in the last two weeks for each county. The metric takes into consideration the number of tests performed for residents of the county in the previous two weeks. Categorization:
 - **Low: $\leq 5.0\%$**
 - **Medium: 5.1% - 9.9%**
 - **High: $\geq 10.0\%$**

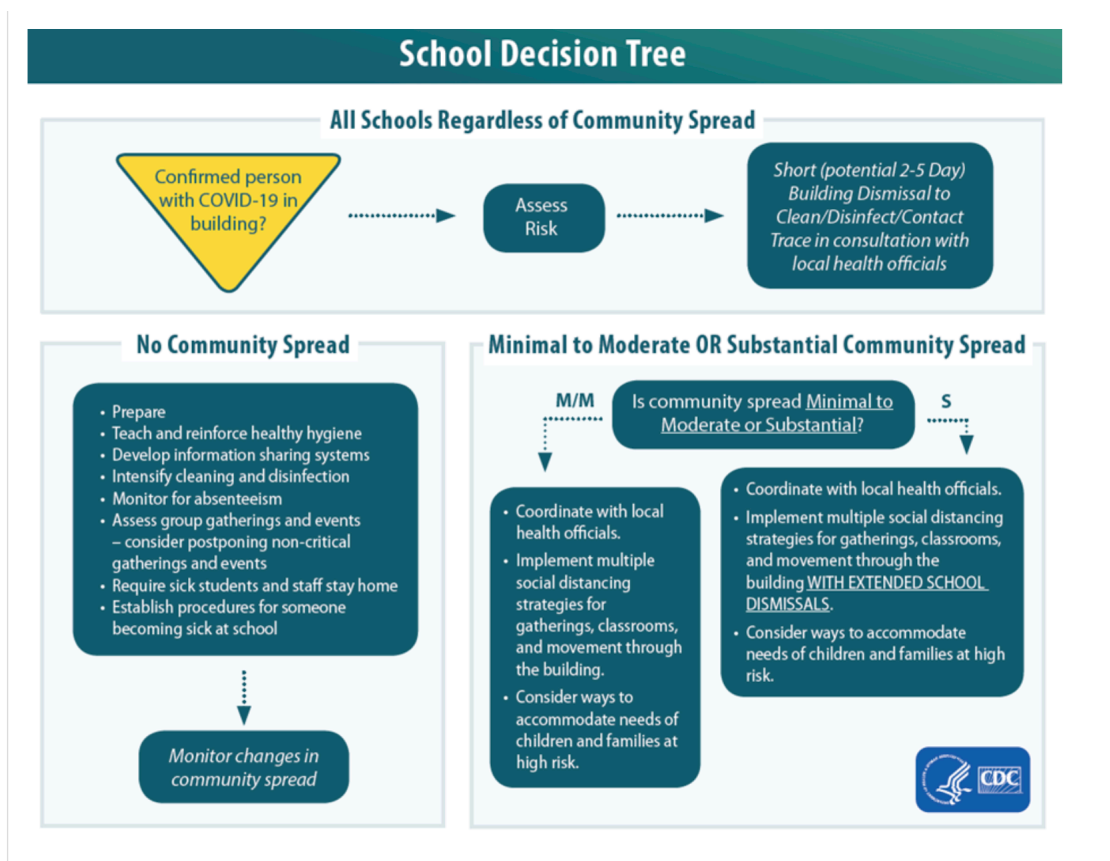
Reference: <https://www.scdhec.gov/infectious-diseases/viruses/coronavirus-disease-2019-covid-19/sc-cases-county-zip-code-covid-19>

Lancaster County School District Reopening Considerations 2020-2021 School Year



How should schools prepare for, and respond to, COVID-19?

Schools should be prepared for COVID-19 outbreaks in their local communities and for individual exposure events to occur in their facilities, regardless of the level of community transmission, for example a case associated with recent travel to an area with sustained COVID-19 transmission. The following decision tree can be used to help schools determine which set of mitigation strategies may be most appropriate for their current situation.



Reference: <https://www.cdc.gov/coronavirus/2019-ncov/community/schools-childcare/guidance-for-schools.html>