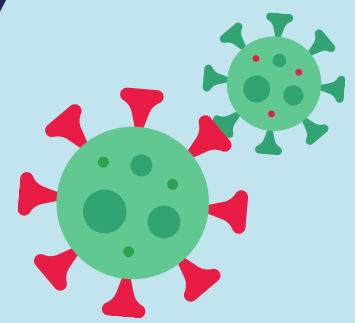


Frequently Asked Questions



What do I do if my child has covid-like symptoms and/or tests positive for Covid-19? Keep your child (and other siblings) home to begin quarantine. Contact the school nurse ASAP and fill out a Covid reporting form found on your school website.

Will the district accept at-home covid test results? Yes. At home test results will be accepted as long as a DHEC Attestation Form is submitted with test results.

What is a close contact? Someone who was within 6 feet of an infected person for a cumulative of 15 minutes or more over a 24- hour period from 48 hours prior to the onset of symptoms. Students wearing a mask within 3-6 feet are excluded.

How long do close contacts quarantine? The CDC recommends a 10 day quarantine. LCSD offers a Test To Stay option where asymptomatic students can remain in the classroom, testing for covid on day 5. Students considered close contacts must still wear a mask for the full 10 days, regardless of a negative test result or being asymptomatic.

Do I have to keep siblings home if someone in the house tests positive? Yes. The quarantine period for close contacts at home begins after the positive case is released from isolation (at least 5 days after symptom onset or test date if no symptoms) plus an additional 5 days. If the household close contact tests negative on day 10 and remains asymptomatic, they can return to school as part of the TTS Program and wear a mask through day 15.

Does my child have to quarantine if he/she has already had covid? Not if they received a positive pcr or antigen test within the past 90 days. Those students will be allowed to attend school and wear a mask for the full 10 day period.

Do students and staff who are fully or maximally vaccinated have to quarantine? A person does not need to quarantine, if they are asymptomatic, and voluntarily choose to provide documentation if they're fully vaccinated (if 5-17 years old) or maximally vaccinated (18 years or older) but will need to wear a mask at school for the full 10 days.