



## ■ Multi-Purpose Building for Andrew Jackson

Status Floor Plans, Site Plans, Images

# New Multi-Purpose Buildings - Project Overview

## ■ Project Scope:

### ■ Andrew Jackson Multi-Purpose / Fine Arts

- 58,800 SF
- 1,500 capacity in the MP Gym with Bleachers
- MP Gym with Stage and Support Facilities, Walking Track
- Art, Band, Chorus, Strings, Piano, Drama, Dance, Flex Classrooms

### ■ Buford High School / Lancaster High School

- 48,000 SF
- 1,500 capacity in the MP Gym with Bleachers
- MP Gym with Stage and Support Facilities, Walking Track
- Flex Classrooms

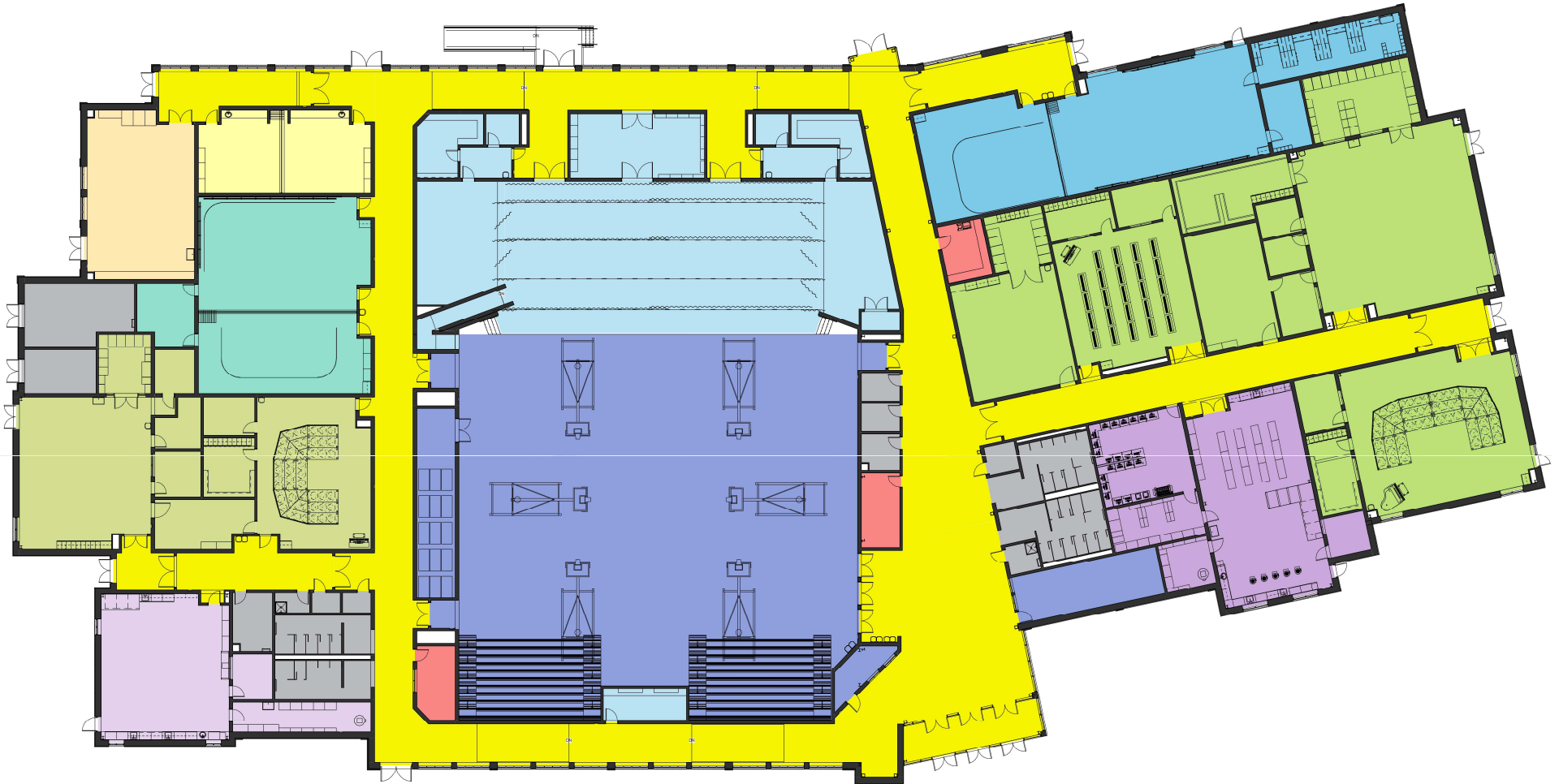
## ■ Site Amenities:

- Parent Car, Student Car and Bus Site Circulation
- Parking

11/13/5 - (11/13/5) 11/13/5

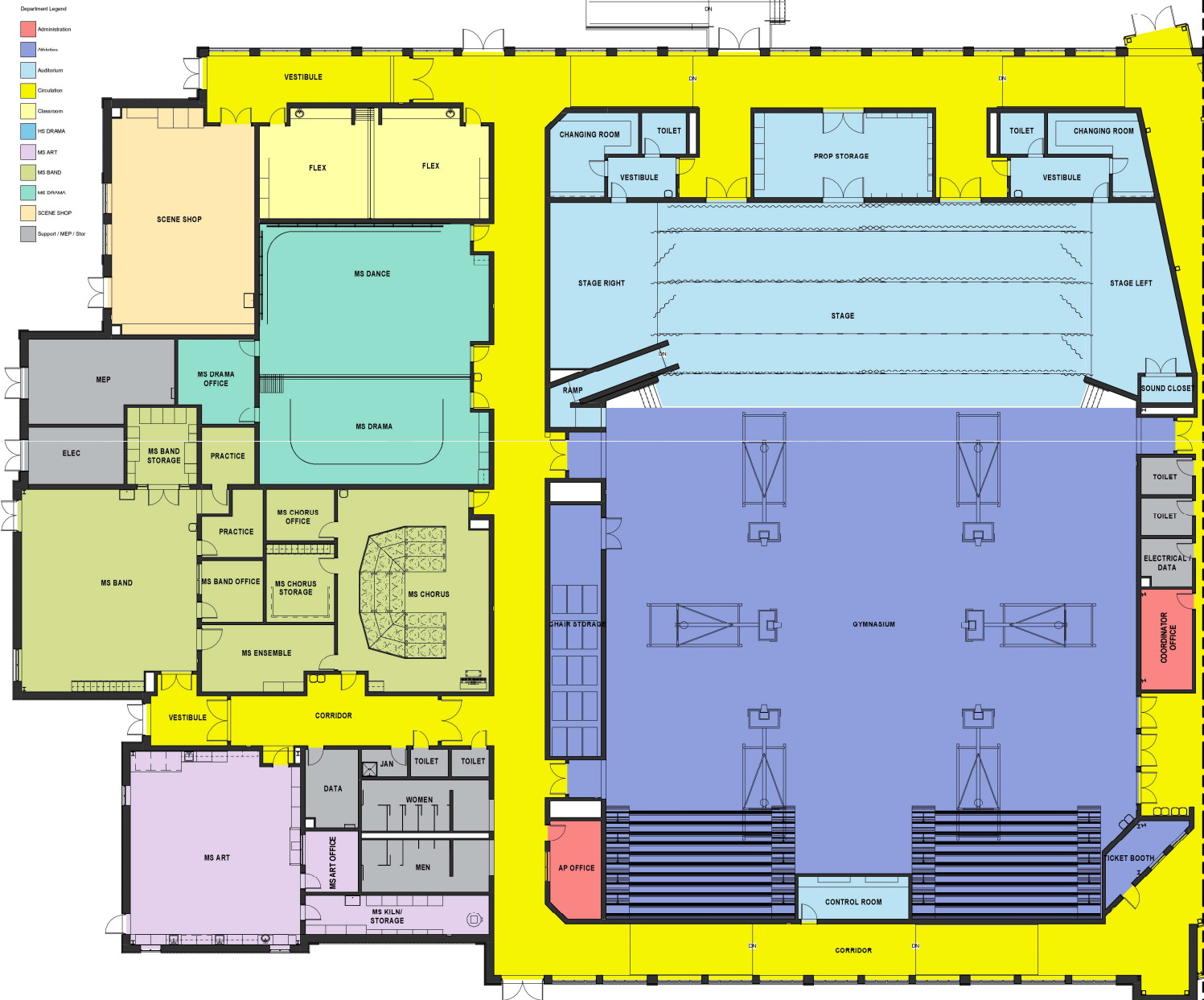


# Andrew Jackson – Overall Floor Plan

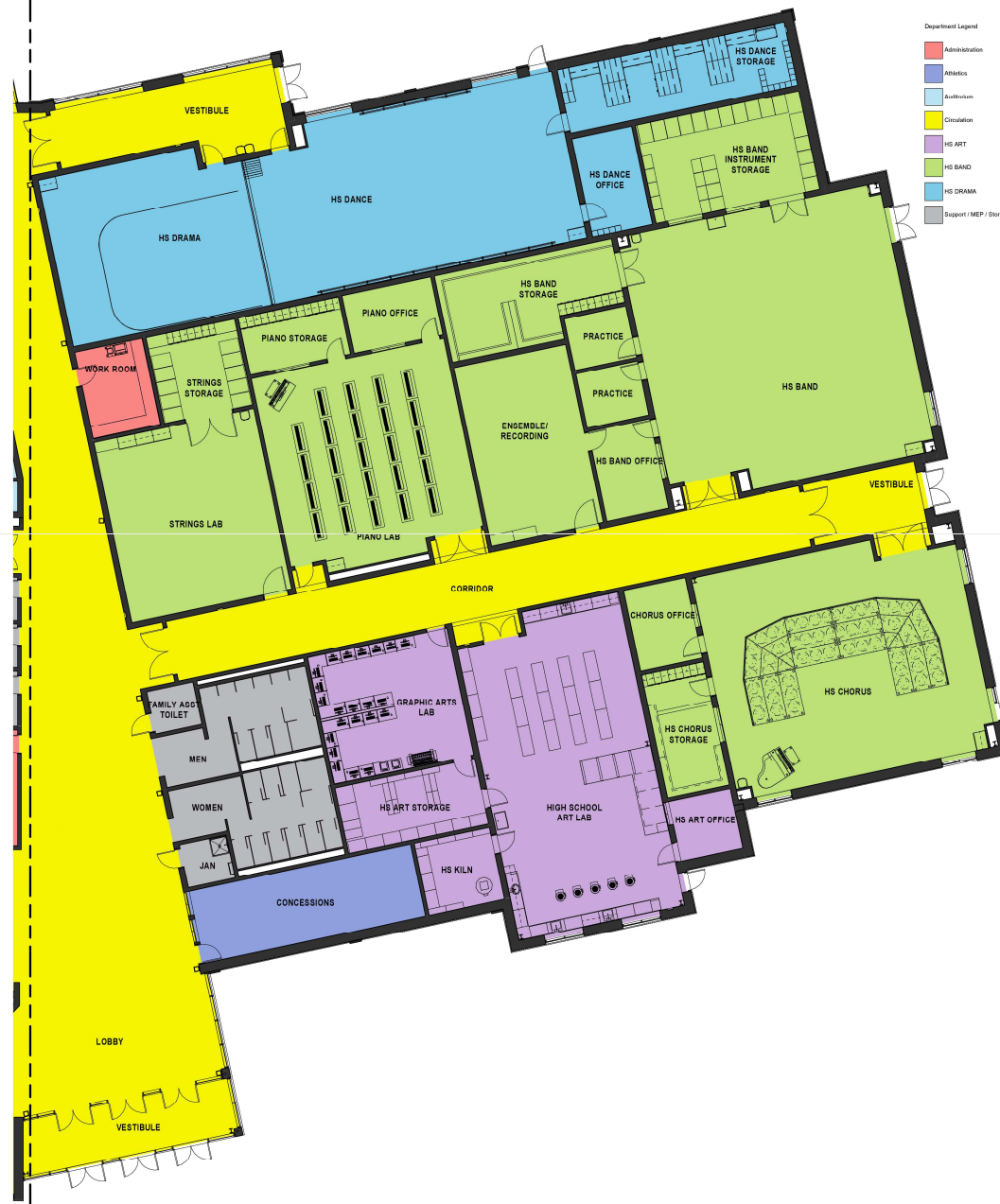




# Andrew Jackson - Floor Plan



# Andrew Jackson Floor Plan





# Andrew Jackson MP Rendering



**QUESTIONS???**

**THANK YOU !**